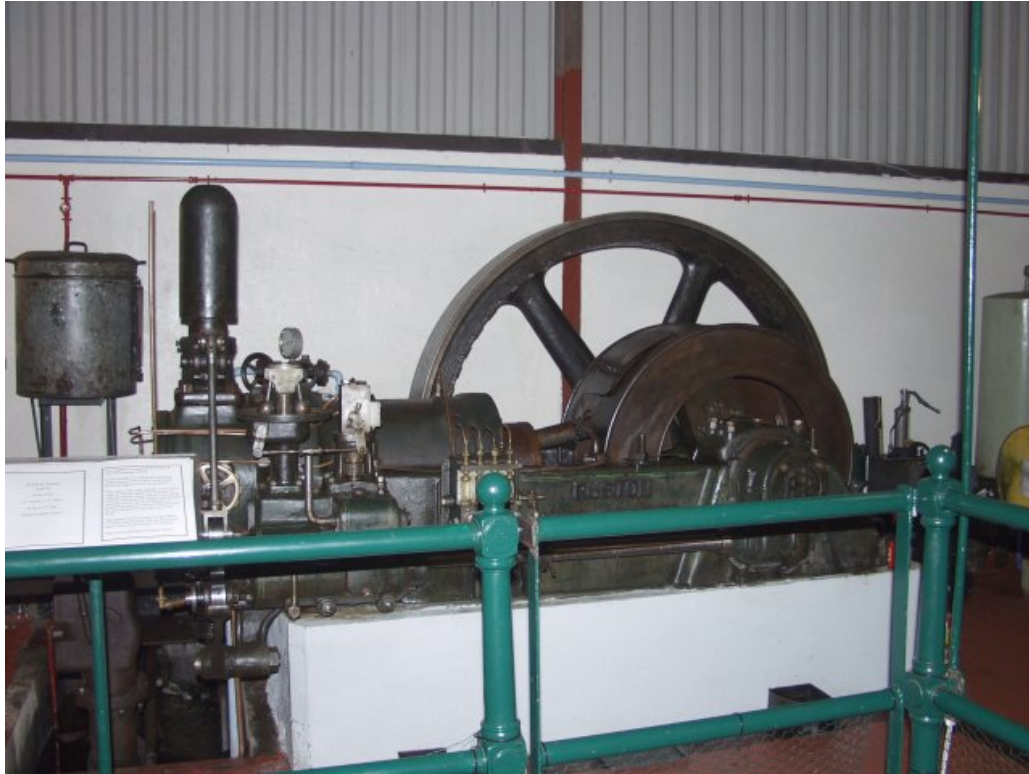


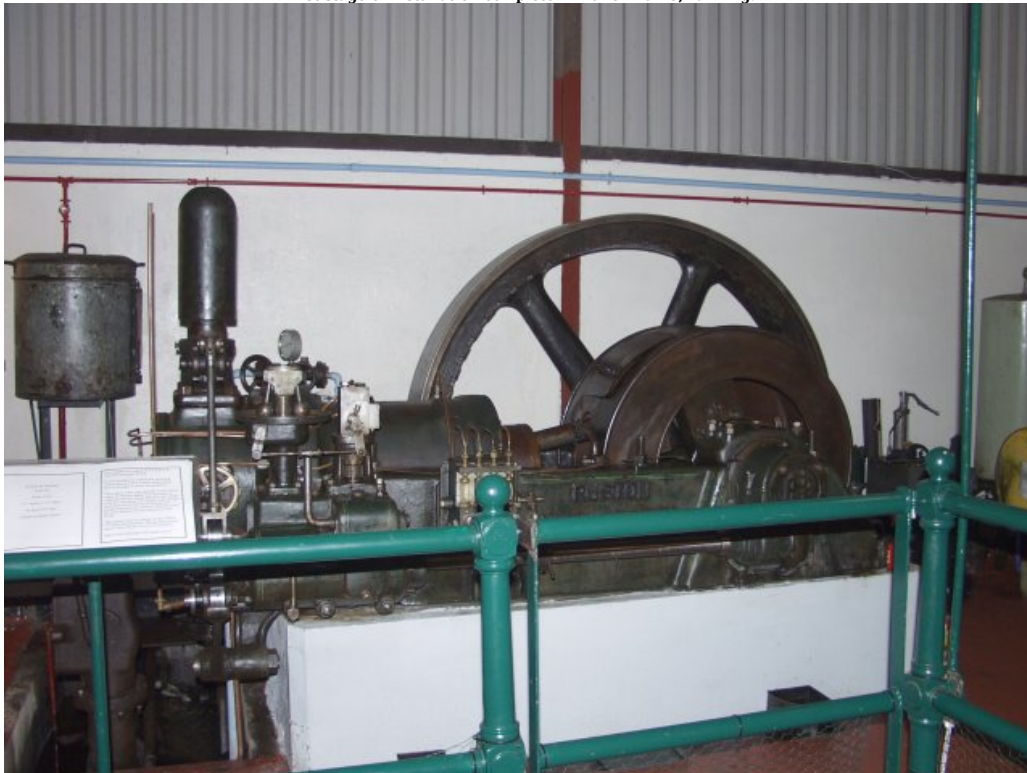
# Ruston 9H

Object ID	1
Object Name	Ruston 9H
Object Date	1923-01-23
Works Number	
Location	Installed in Hall 2
Category	Engine
Acquired	1997-06-03
Status	On Display

Description



First stage of installation complete in Power Hall 3, running.



Manufacturer	Ruston & Hornsby Ltd
Manufactured	Lincoln, England
Condition	Running
Core	false
Accession No	IF:LN:2003:022

Collection Id	Castell Pridd Engines
Shortman	
Image	 A photograph of a vintage steam engine, likely a portable engine, displayed in a museum. The engine is mounted on a white base and features a large, dark flywheel with a curved rim. To the left of the flywheel is a vertical cylinder, possibly a condenser or a water tank. The engine is surrounded by a green metal railing. In the background, there are white walls and a corrugated metal ceiling. A small informational sign is visible on the left side of the engine.