

Allen Engineering Review No 12

Object ID	1901
Object Name	Allen Engineering Review No 12
Object Date	1941-10-01
Works Number	AER No 12
Location	Archive Room
Category	Magazine
Acquired	2007-10-03
Status	Scanned
Description	
Manufacturer	W. H. Allen Sons and Co. Ltd
Manufactured	Bedford, UK
Condition	Good
Core	true
Accession No	IF:2007:149
Collection Id	W.H. Allen Heritage
Shortman	

AGENTS—C. HENDERSON & CO. LTD.
73 ROBERTSON STREET, GLASGOW.

The

ALLEN ENGINEERING REVIEW



Published by
W. H. ALLEN, SONS & CO., LTD., BEDFORD, ENGLAND

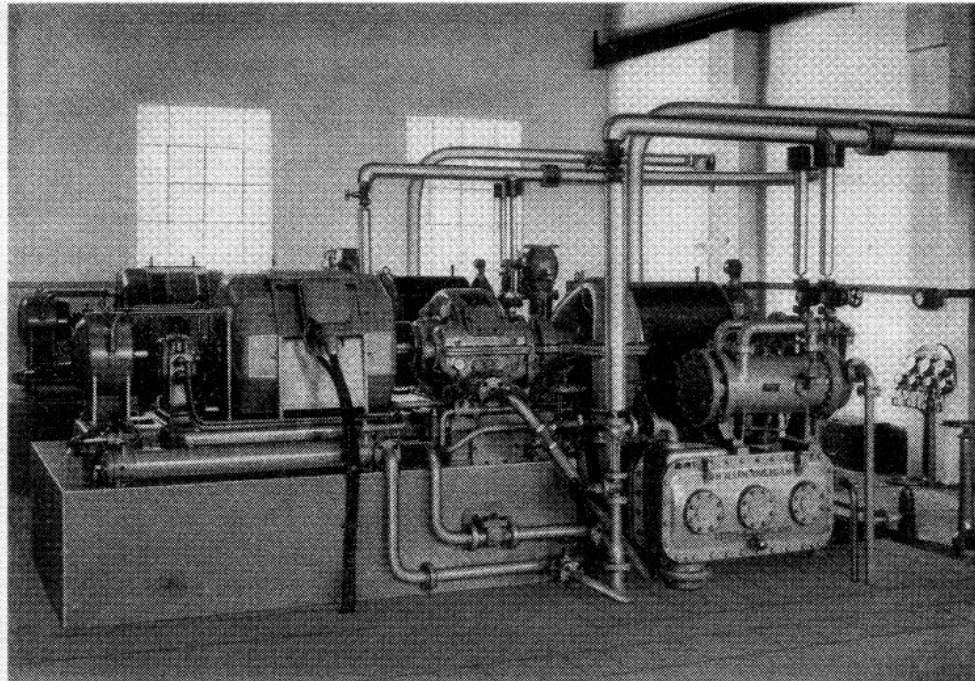
No. 12

ISSUED QUARTERLY

OCTOBER, 1941

CONTENTS

	PAGE		PAGE
MODELS AND THEIR APPLICATION TO HYDRAULIC RESEARCH	2	QUALITY PRODUCTION IN ENGINEERING—VI	5
STEAM TURBINES FOR SERVICE OVERSEAS	4	S30-B OIL ENGINE REVIEWED—III: THE ENGINE IN SERVICE	7



Two 400 kW. "Awlinwun" Condenser-Turbo-Alternators in a Transvaal (S.A.) Municipal Power Station.

Overload capacity	25% for 2 hours.	Steam pressure at stop valve	240 lbs. per sq. in. gauge.
Turbine speed	7,000 r.p.m.	Total temperature at stop valve	600 degs. Fahr.
Alternator speed	1,500 r.p.m.	Exhaust	28 in. Hg. vacuum (Bar, 30 in. Hg.)

Each set is provided with tandem vertical spindle circulating water and condensate extraction pumps driven through bevel gearing off the steam end of the main turbine shaft. The steam jet air pump is mounted above the condenser water box, and the condenser with its auxiliaries forms therefore a very compact arrangement, the condenser shell itself acting as the baseplate for the turbine.