

Allen Engineering Review No 18

Object ID	1907
Object Name	Allen Engineering Review No 18
Object Date	1948-03-01
Works Number	AER No 18
Location	Archive Room
Category	Magazine
Acquired	2007-10-03
Status	Scanned
Description	
Manufacturer	W. H. Allen Sons and Co. Ltd
Manufactured	Bedford, UK
Condition	Good
Core	true
Accession No	IF:2007:155
Collection Id	W.H. Allen Heritage
Shortman	

The ALLEN ENGINEERING REVIEW



Published by
W. H. ALLEN, SONS & CO., LTD., BEDFORD, ENGLAND

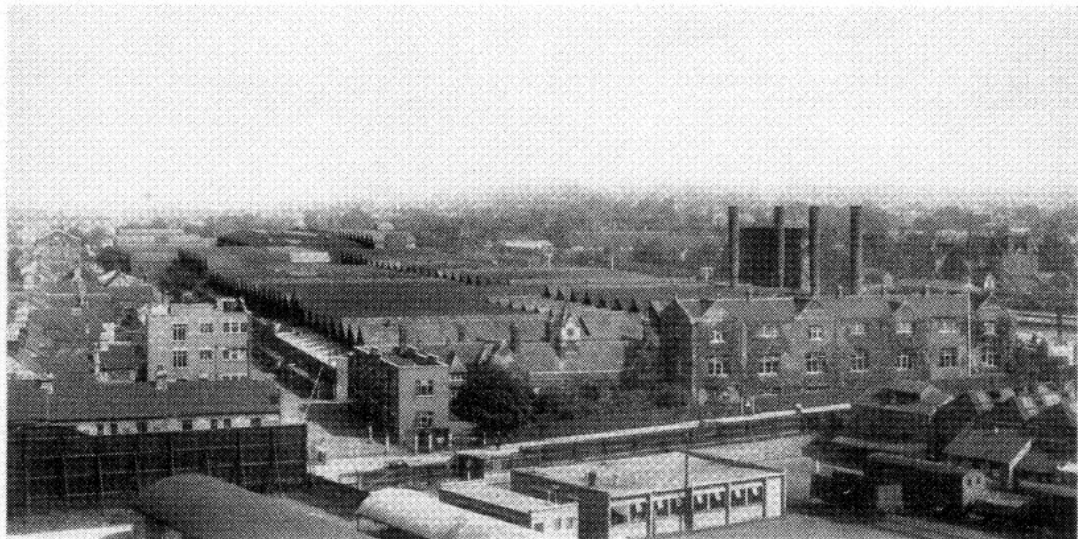
No. 18

ISSUED QUARTERLY

MARCH, 1948

CONTENTS

	Page		Page
SHAFT TUNNELS FOR BOREHOLE AND WELL PUMPS ..	2	POWER GENERATING PLANT AND PUMPING PLANT FOR	
CORROSION-FATIGUE ..	4	ESSENTIAL SERVICES AND INDUSTRY ..	10
COTTON WOOLLE SPOWNE ..	6	MACHINERY AILMENTS AND THEIR DIAGNOSIS ..	14
AUXILIARY EQUIPMENT FOR R.M.S. <i>Nova Scotia</i> AND		A DODECAHEDRON ..	15
<i>Newfoundland</i> ..	9		



THE ALLEN HEAD OFFICE AND QUEEN'S ENGINEERING WORKS, BEDFORD

THIS photograph, taken from the south end of the Queen's Engineering Works, Bedford, gives an up-to-date impression of the site and size of the property. The photograph was taken from the highest available building in the vicinity, and the various office and works buildings will be easily distinguished by many people who have visited the Works. In the July, 1946, issue of this journal, devoted exclusively to the Company's war effort, references were made to a number of additions and alterations to various buildings carried out during the war, and among further important alterations completed since the end of hostilities are the re-construction, enlargement and modernization of the Foundries and Pattern Shop, and the erection of a large self-contained General Stores. The new buildings for these are situated at the north end of the works and the roofs only appear distantly in the photograph. The original office building with clock spire is in the centre, and the next office extensions comprised the three-storey building to the right. The latest block of offices is erected on the site of the old Gatehouse and adjoining building, on the right-hand side of the main entrance which is clearly shown, while the Works Management three-storey block of offices is to the left of the main entrance and works road.