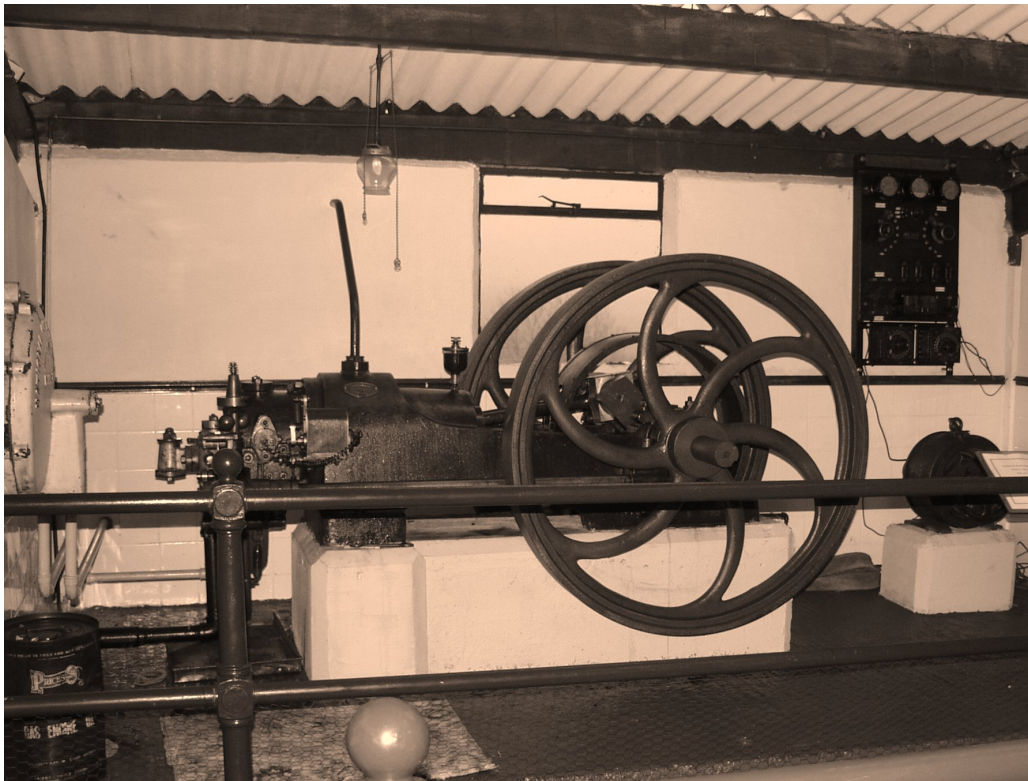
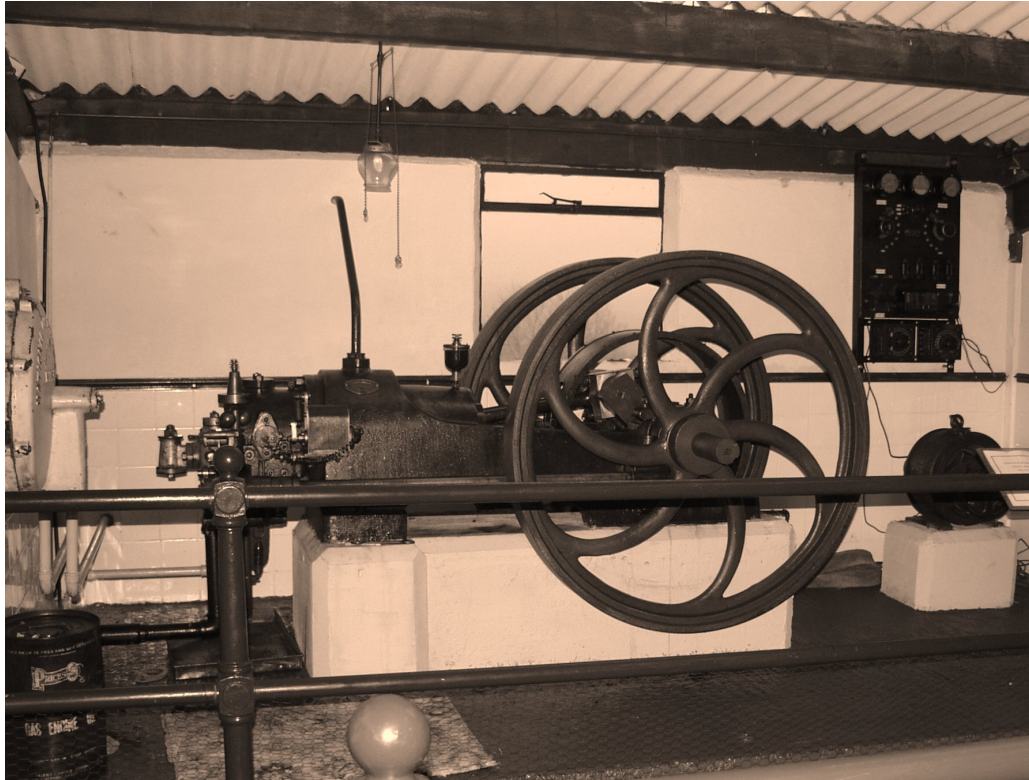


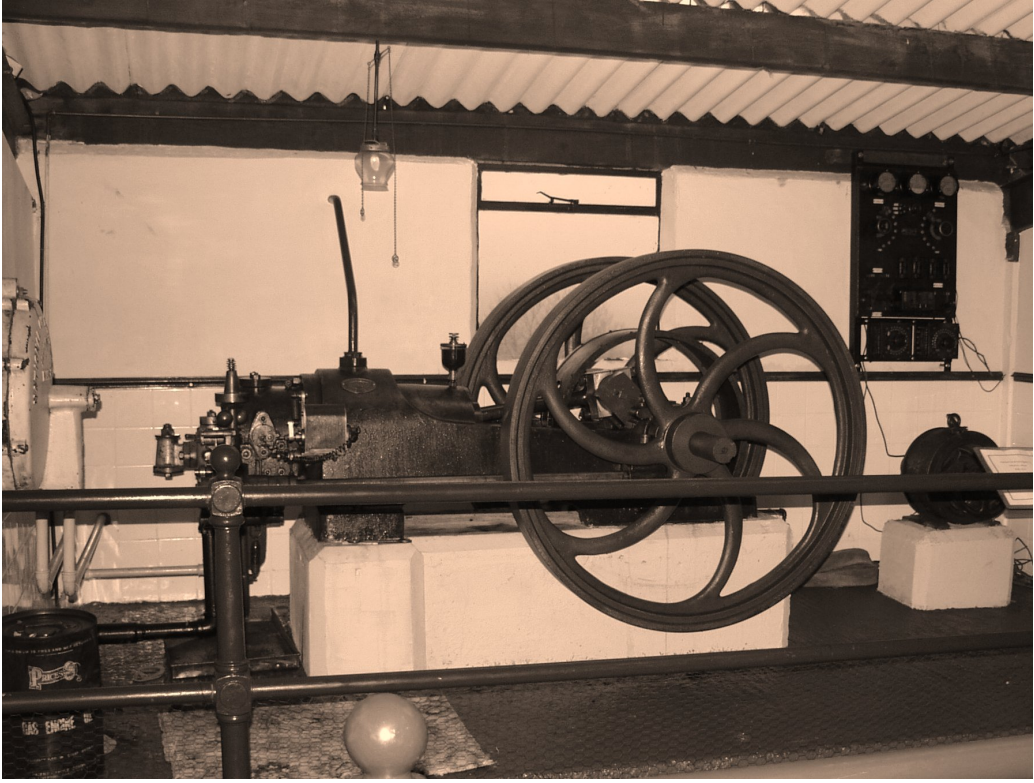
National P Type Gas

Object ID	3
Object Name	National P Type Gas
Object Date	1913-01-13
Works Number	29204
Location	Power Hall 5
Category	Engine
Acquired	2000-08-04
Status	On Display

Description



Manufacturer	National Gas and Oil Engine Co. Ltd.
Manufactured	Ashton-under-Lyne, Manchester
Condition	Maintenance
Core	false
Accession No	IF:LN:2003:029

Collection Id	Castell Pridd Engines
Shortman	
Image	 A photograph of a vintage steam engine, likely a portable engine, displayed in a museum. The engine is mounted on a white concrete base and features two large, dark metal flywheels. The engine is positioned in a room with white walls and a corrugated metal ceiling. A black metal railing is visible in the foreground, and a small globe sits on the floor near the base of the engine. The engine is connected to a horizontal pipe system. In the background, there is a window and a control panel with several gauges and switches. A hanging light fixture is visible above the engine.