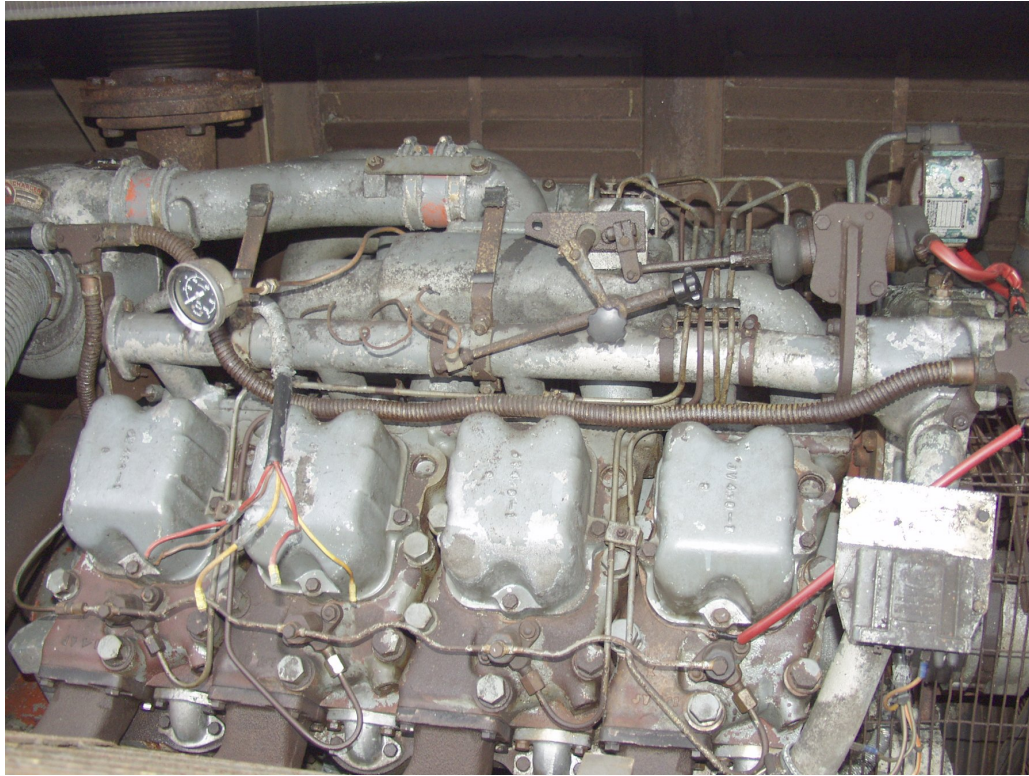


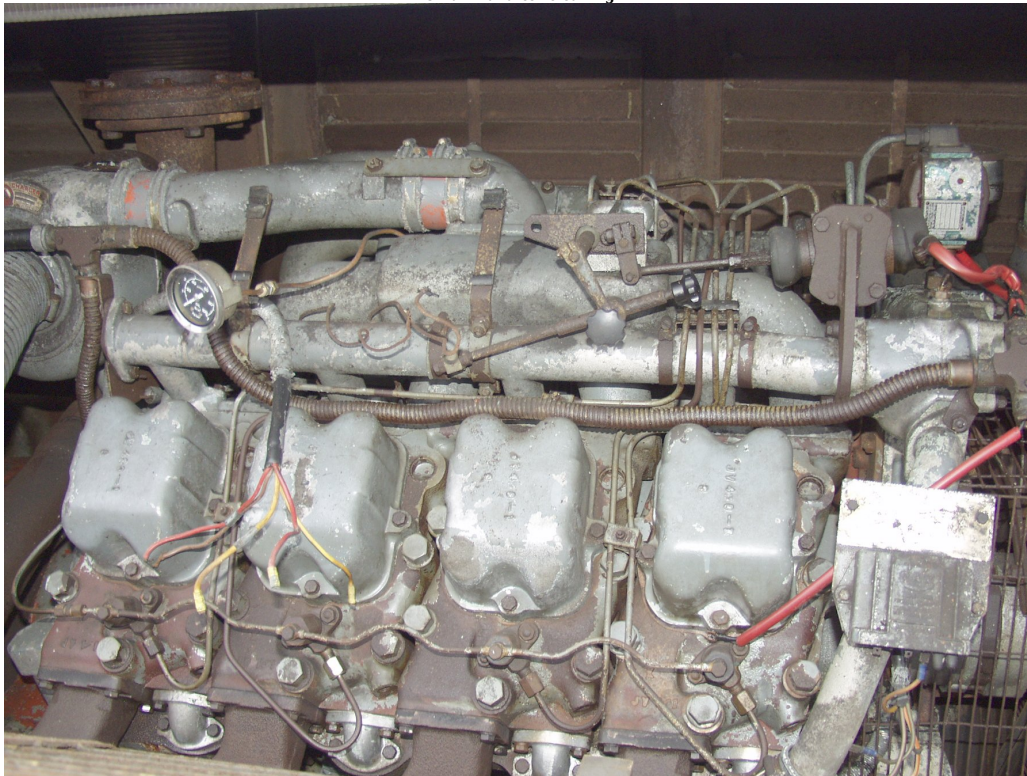
Dorman 8JT

Object ID	4135
Object Name	Dorman 8JT
Object Date	1971-04-30
Works Number	
Location	External storage
Category	Engine
Acquired	2012-12-08
Status	On Display

Description



On arrival after cleaning



Manufacturer	W. H. Dorman and Co. Ltd
Manufactured	Stafford, England
Condition	Running
Core	true
Accession No	IF:2012:155

Collection Id	Internal Fire Core Collection
Shortman	
Image	 A photograph of a complex industrial engine, likely a fire engine, showing various components like pipes, valves, and a pressure gauge. The engine is mounted on a metal frame and features several large, cylindrical components, possibly fuel tanks or air filters, and a network of pipes and hoses. A prominent pressure gauge is visible on the left side. The engine is situated in a dark, enclosed space, possibly a fire engine compartment.